

Pinch Control Valve for endless tube 7077 with integrated positioner DN 6 up to DN 14

SCHUBERT & SALZER
**CONTROL
SYSTEMS**

Pneumatically operated control valves for applications in chemistry, food industry and pharmaceuticals.

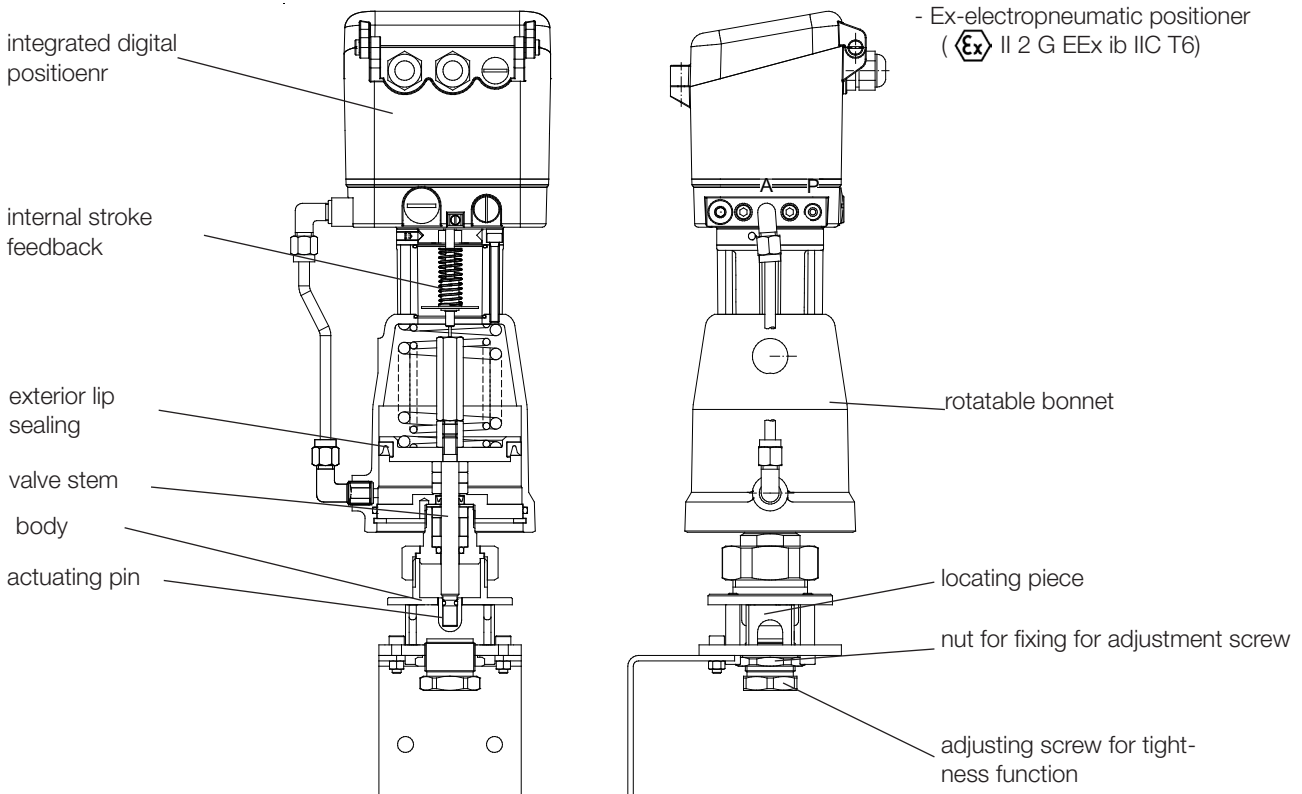
- Integrated positioner
- Fast and simple change of tube
- Cavity free can be sterilized using steam or hot gas
- No fluid contact to the valve
- working pressure up to 4 bar



Options:

e.g.:

- Optical position indicator
- External I/P-converter
Type 8045
- Ex-electropneumatic positioner
(Ex II 2 G EEx ib IIC T6)



Positioner

For technical information of our positioners please refer to the corresponding data sheets.

Pinch Control Valve for endless tubes 7077

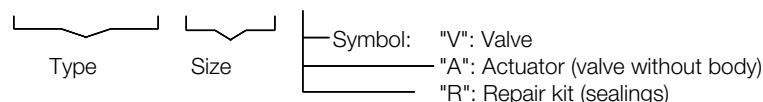
with integrated positioner

Technical Information Valve

| | |
|---------------------------------|--|
| Nominal size | DN 6 - 10 - 14 |
| Tube (outer diameter) | 10 - 14 - 18 mm |
| 3 interchangeable fixing pieces | 10 - 14 - 18 mm |
| Adjustment of stroke | complete stroke 17mm (Standard) 4, 5, 6, 7, 9, 11, 13, 15 mm (with software adjustable) |
| Body material | stainless steel 1.4301 |
| Working pressure | 0 - 4 bar according to the quality of the tube, the shore hardness and the thickness of the tube material |
| Tube types | all types of elastomer up to shore hardness 65°A |
| Pilot pressure | 3 - 6 bar |
| Thread for pilot connection | G 1/8" |
| Fluid temperature | -30°C up to +170°C (according to the quality of the tube) |
| Weight | 4,4 kg |

Ordering Number System

| | | | | | | | | | | | | | | | | | | | |
|---|---|---|---|---|--|--|--|---|---|--|--|--|--|--|--|--|--|--|---|
| | | | | | | | | | | | | | | | | | | | |
| 7 | 0 | 7 | 7 | / | | | | V | 9 | | | | | | | | | | S |



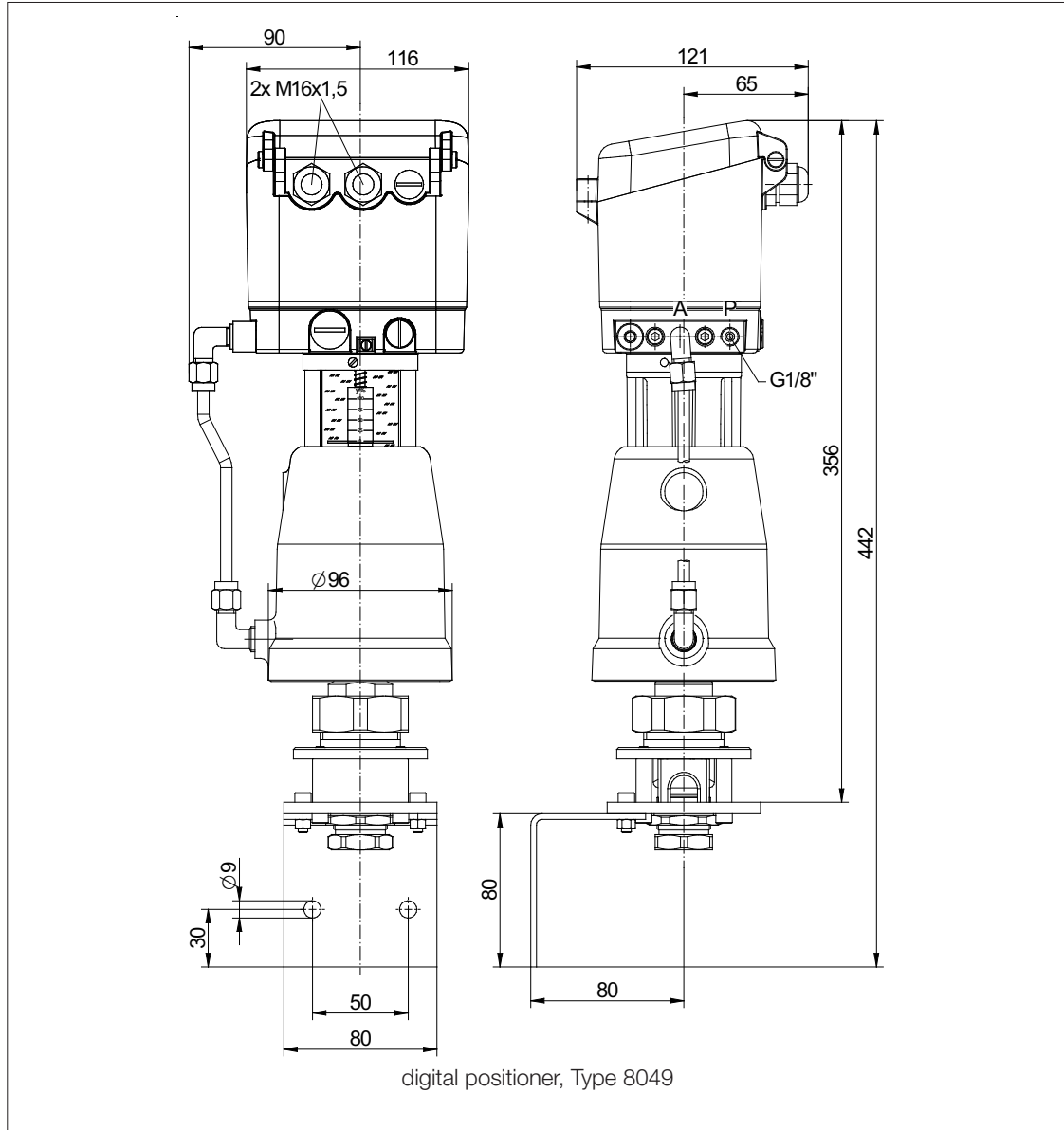
| 1. Body type | 2. Material of the lower part | 3. Material of the actuator | 4. Positioner | 5. Actuator | 6. Springs |
|--|--|---|--|--|---|
| 1 pinch control valve for endless tubes Type 7077 | A stainless steel 1.4301 | 1 brass, chrome plated 2 stainless steel 1.4408 3 plastic | - without 6 p/p positioner 7 i/p positioner 8 i/p positioner with plug connection M12x1 9 i/p positioner ex-proof (II 2 G Eex ib IIC T6), plug connection M12x1 C digital positioner, type 8049 4 wire R digital positioner type 8049 2 wire T digital positioner type 8049 AS-i version W digital positioner type 8049 2-wire, ex-version | 1 piston 80 mm | - without significance 1 spring to open (only with digital positioner) |
| 7. Adjustment of the stroke | 8. Fittings | 9. Accessories | 10. Special versions | 11. Adjustment of the positioner | 12. Adjustment of the supply air |
| - complete stroke (17 mm) 4 adjustment 4 mm 5 adjustment 5 mm 6 adjustment 6 mm 7 adjustment 7 mm 9 adjustment 9 mm A adjustment 11 mm B adjustment 13 mm C adjustment 15 mm | - without fittings and tubing made from PA 2 fittings and tubing made of brass nickel-plate 3 fittings and tubing made of stainless steel 1.4571 | - without pilot-valve DN2 230V AC 6 pilot-valve DN2 24V DC 7 pilot-valve DN2 24V/50Hz C pilot-valve DN2 24V/50Hz | S State, if further sections are quoted | - standard 0 0 - 20 mA 3 inverse function 20 - 4 mA 7 0 - 10 V | - standard 1 adjustment of the positioner with 5 bar supply air G positioner with low air consumption H positioner with high air consumption |

Ordering Example: 7077/014V91A2C1--3
 Pinch control valve for endless tubes, DN 14, material of the lower part 1.4301, actuator Ø 80 mm stainless steel 1.4408, digital positioner 4 wire, adjustment of the stroke 17mm, fittings and tubing made of stainless steel 1.4571

Pinch Control Valve for endless tubes 7077

with integrated positioner

Dimensions and Weights



Weight: 4,7 kg