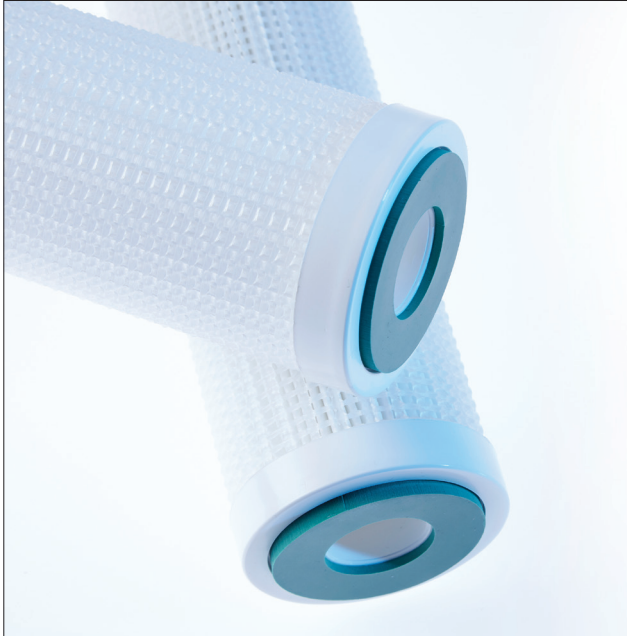




# PLEATFLOW

## Liquid filter cartridges



The Pleatflow range of filter cartridges offer ideal solutions for the pre and final filtration of a wide variety of process liquids, providing long service life at minimal cost.

The 100% polypropylene hardware construction of the filter ensures minimum extractable levels with a range of industrial solvents and optimal integrity when used in physically demanding applications.

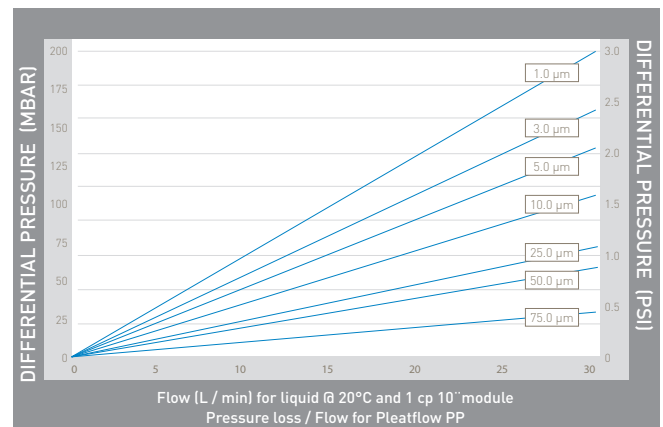
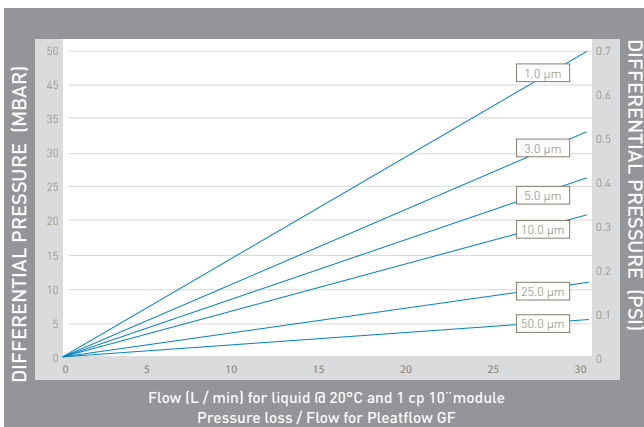
Pleatflow filter cartridge manufacturing utilises graded density medias in both glass fibre and polypropylene. The filter design provides broad chemical compatibility, consistent efficiency and superior service life.

With absolute rated filtration efficiency and high surface area, Pleatflow filter cartridges are a cost effective solution for both pre and final filtration.

Features	Benefits
Absolute rated efficiency 99.98% from 1 to 75 micron.	Consistent absolute retention suitable for a wide range of clarification applications.
Available in a comprehensive range of end cap configurations and continuous lengths up to 40".	Simple retrofitting to existing systems and housings.
Continuous length with rigid cage and core.	Provides high strength during operation.
High pleated surface area available in both PP and GF.	High flow rates and low initial pressure losses.

- ✓ Catalyst recovery
- ✓ Reagent grade chemicals
- ✓ Make-up and wash waters
- ✓ Membrane prefiltration

APPLICATIONS





# PLEATFLOW

## Liquid filter cartridges

### Specifications

#### Materials of Construction

Filtration media:	Polyester
	Glass fibre / polyester
	Polypropylene
Inner support core:	Polypropylene / stainless steel
Outer protection cage:	
Rigid outer:	Polypropylene
Net:	Polyethylene
End caps:	Polypropylene / nylon
Standard o-rings / gasket:	Nitrile
	EPDM
	Silicone

#### Effective Filtration Area

Polypropylene up to 0.55m<sup>2</sup> (5.9ft<sup>2</sup>) per 250mm (10" module).

Glass fibre up to 0.48m<sup>2</sup> (5.2ft<sup>2</sup>) per 250mm (10" module).

#### Recommended Operating Conditions

##### Maximum Temperature:

65°C (149°F)

##### Maximum Differential Pressure:

4 barg (58 psid)

##### Recommended Change Out Pressure:

2.5 barg (36 psid)

NOTE: PLEATFLOW GF and PP cartridges are designed to operate at a maximum working temperature of 65°C (149°F) and maximum differential pressure of 4 barg. If applications require temperatures and pressures beyond these limits Parker domnick hunter can offer elements with stainless steel cores and end caps.

Micron Rating	Liquid Service	
	90% Efficiency (micron)	Absolute Efficiency (micron)
1	0.25	1.0
2	0.5	2.0
5	1.0	5.0
10	3.0	10.0
25	10.0	25.0
50	25.0	50.0

### Ordering information

Code		Length (Nominal)	Code	Micron	Code	Media	Code	Core / End Cap	Code	Outer Cage	Code	End Fitting	Code	Seal Material
G		5"	01	1	01	Polyester	2	Polypropylene	1	Black net	0	Double open end	E	EPDM
		9.75" [247mm]	02	2	02	Glass fibre / Polyester	3	Stainless steel / nylon	2	Blue net	2	Flat / 226	N	Nitrile
		9.875" [251mm]	05	5	T5	Polypropylene	4*	All stainless steel	3	Green net	3	Flat / 222	S	Silicone
		10" [254mm]	10	10			5	Stainless steel / Polypropylene	4	Natural net	7	Fin / 226	V	Viton
		11" [254mm]	25	25				*DOE only	5	Red net	8	Fin / 222	0	No gasket
		19" [500mm]	50	50					7	Rigid net	9	Flat / 213		
		20" [508mm]	75	75*					0	No outer cage				
		29" [750mm]	99	100**					5	Stainless steel				
		30" [762mm]	* Polypropylene only											
		39" [1000mm]	** Polyester only											
		40" [1016mm]												

Cartridge lengths are measured over end cap shoulders. For DOE type cartridge lengths are measured over gaskets. Standard elements have diameter 2.7" (68mm). In nominal lengths of 10, 20, 30, 40 inches. (250, 500, 750, 1000mm).



Parker domnick hunter has a continuous policy of product development and although the Company reserves the right to change specifications, it attempts to keep customers informed of any alterations. This publication is for general information only and customers are requested to contact our Process Filtration Sales Department for detailed information and advice on a products suitability for specific applications. All products are sold subject to the company's standard conditions of sale.

DS\_IP\_08\_REV1