

GKM Series

Global Miniature Safety Key Interlock Switch

GKM

FEATURES

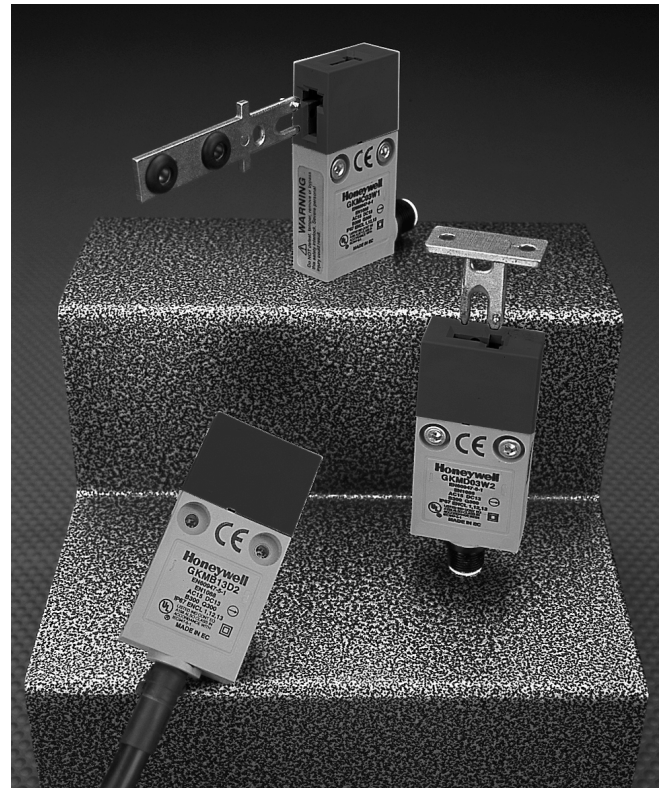
- Red body colour
- Integrated cable or connector(s)
- Bottom or side entry cable
- 90° and straight key
- Top or side key entry
- High switching current capabilities
- Extremely compact enclosure
- Positive opening operation of Normally Closed contacts conforming to IEC/EN 60947-5-1-3
- IP 67 Enclosure rating
- Stackable design allows one switch on top of the other
- Through wiring option (dual connector)
- Dust cap for unused key entry
- Robust stainless steel keys
- UL listed; CSA certified, CE approved

BENEFITS

- Immediately recognisable as safety component
- Reduced installation time and costs
- Flexibility in mounting/actuation options
- Switch equipment directly and through safety control modules
- Fits into extremely compact spaces
- Suitable for wet applications
- Extremely simple mechanical redundancy as well as electrical redundancy
- Very easy to apply to multiple door modular machinery - no difficulty in wiring small switch enclosures
- Durable and tough design



(Pending)



Used alone as Category 1 safety components or, in conjunction with other safety switches and our complete range of safety relays, it is possible to construct comprehensive protection schemes with Category 2, 3 or 4 compliance.

The preleaded versions allow rapid fit, easy cable routing and function testing which cut costs dramatically in OEM applications. Simple upgrade guarding solution for End User applications.

Low energy basic switches are rated as follows:

Operating Voltage U_e	1 to 50 Vac or Vdc
Operating Current I_e	1 μ A to 100 mA

Example of catalog listing using a low energy basic switch - GKMA19W1

WARNING

MISUSE OF DOCUMENTATION

- The information presented in this product sheet (or catalogue) is for reference only. DO NOT USE this document as system installation information.
- Complete installation, operation and maintenance information is provided in the instructions supplied with each product.

Failure to comply with these instructions could result in death or serious injury.

GKM Series

Miniature Safety Key Interlock Switches

Technical Data

Mechanical

life >1 Million operations

Degree of protection

IP 66/67, EN 60529
NEMA 1, 12, 13

Temperature range

-25 °C to +85 °C /
-13 °F to +185 °F

Approvals*

IEC 60947-5-1,
EN 60947-5-1, EN 1088,
EN 60204,
UL508,
CSA22-2-14, UL748C
Utilization category
ac15, B300
dc13, Q300

Vibration

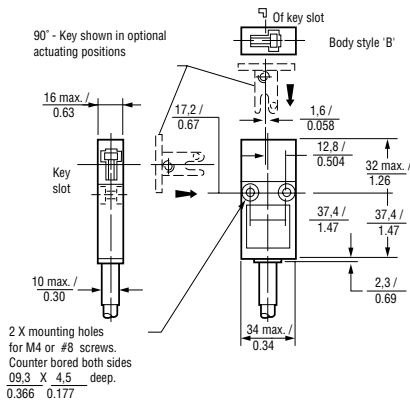
IEC 68-2-6
10 g

Shock

IEC 68-2-27
50 g

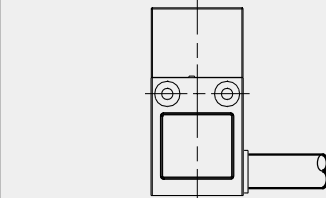
* See Standards (page 179)

Dimensions in mm / in



Body Style

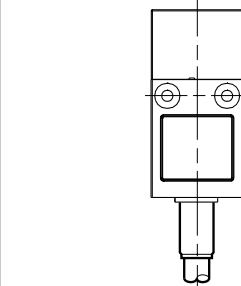
Cable/Connector



A

CABLE LENGTHS IN
1 METRE INCREMENTS

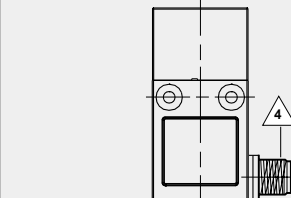
1



B

3 METRES IS NORMAL
MAXIMUM CABLE LENGTH.

3

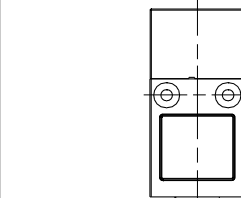


C

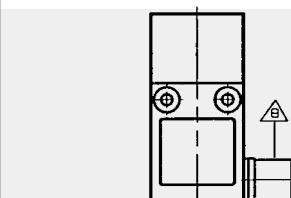
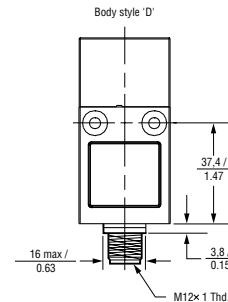
ZERO INDICATES NO CABLE BUT
CONNECTOR

0

4 Micro-change dc Style M12, 4 Pin
with external threads/male

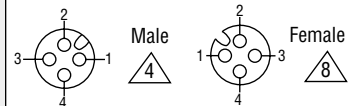


D



E

CONNECTOR PIN-OUTS



8 'F' version
also has 4 Pin with internal threads/female

X

X

Switch Ordering:

GKM

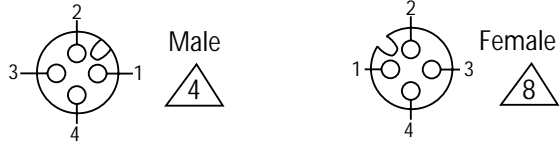
Example: GKMD03 + GKZ52M

• Industrial Safety Products •

GKM Series

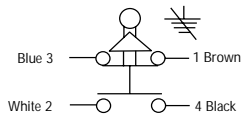
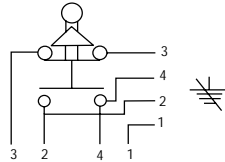
Switch Type

CONNECTOR PIN-OUTS



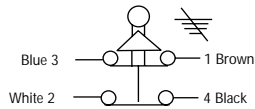
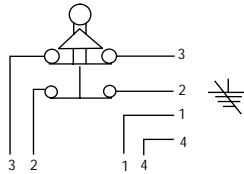
Key Style

SLOW-ACTION CONTACTS
BREAK BEFORE MAKE
1 NORMALLY CLOSED/1 NORMALLY OPEN



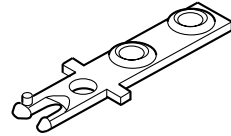
SLOW-ACTION CONTACTS
BREAK BEFORE MAKE
1 NORMALLY CLOSED/1 NORMALLY OPEN
LOW ENERGY CONTACTS

SLOW-ACTION CONTACTS
2 NORMALLY CLOSED

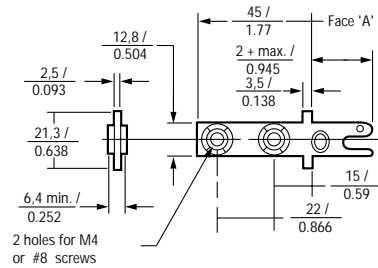


SLOW-ACTION CONTACTS
2 NORMALLY CLOSED
LOW ENERGY CONTACTS

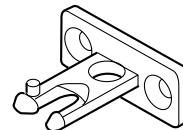
Details of straight key (stainless steel)



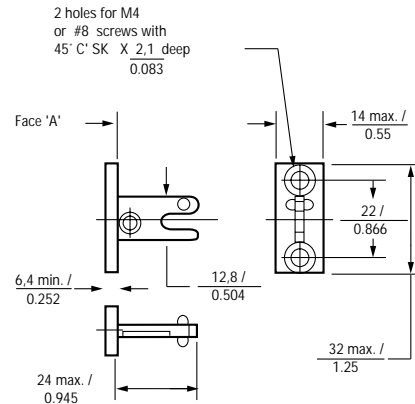
Replacement part number GKZ51M



Details of 90° key (stainless steel)



Replacement part number GKZ52M



3

9[^]

6

7[^]

X

W1

W2

WX

Optional Key Positions

