

Magnetventil NAMUR 5/2- und 3/2- Wege

Solenoid valve NAMUR 5/2- and 3/2- ways

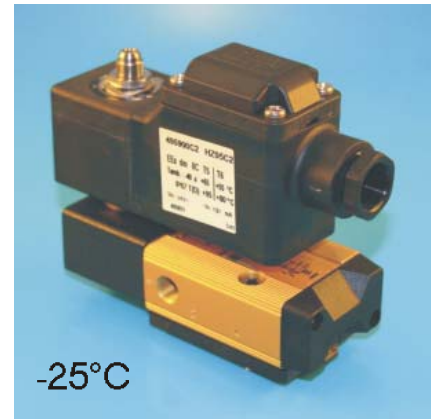
Elettrovalvola NAMUR 5/2- e 3/2- vie

341N3197-495900

Ex II2G/D EEx dm IIC T4,T5,T6 (PARKER)

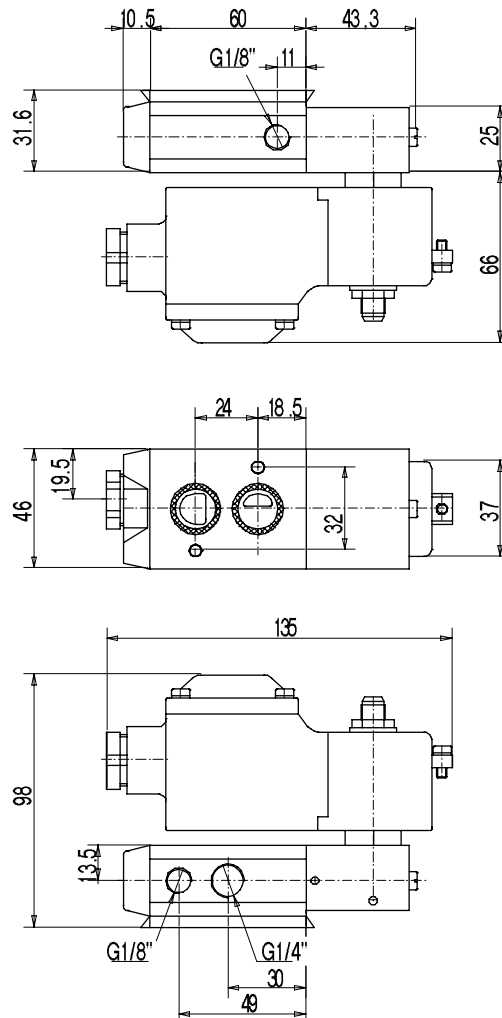
Beschreibung (Description / Descrizione)

- Magnetventil NAMUR mit kombinierter 5/2- und 3/2-Wege Funktion mit explosionssicherer Spule einschließlich Klemmgehäuse
⊗ II2G/D, EEx dm IIC T4,T5,T6 (PARKER)
- Leichtes Umschalten von 5/2- auf 3/2-Wege durch Wendeplatte
- Federrückstellung
- Serienmäßig mit Notbetätigung
- Gehäuse Aluminium eloxiert, NAMUR Wendeplatte Polyamid
- Kolben Kunststoff, Dichtungen NBR, Schrauben Edelstahl 1.4301
- Solenoid valve NAMUR with combined 5/2- and 3/2-ways function with explosion proof coil including junction box ⊗ II2G/D, EEx dm IIC T4,T5,T6 (PARKER)
- Easy change over from 5/2- to 3/2-ways operation by turret plate
- Single stable version
- Manual override as standard
- Body Aluminium anodised
- NAMUR turret plate Polyamide
- Piston plastic, Sealings NBR, Screws stainless steel AISI 304
- Elettrovalvola NAMUR multifunzionale 5/2- e 3/2-vie con bobina in versione anti-deflagrante incl. scatola di giunzione ⊗ II2G/D, EEx dm IIC T4,T5,T6 (PARKER)
- Facile conversione da funzionamento 5/2- a 3/2-vie tramite piastrina della torretta
- Versione monostabile
- Comando manuale in serie
- Corpo Alluminio anodizzato.
- NAMUR piastrina della torretta Polyamide
- Pistone plastica, guarnizioni NBR, viti acciaio inox AISI 304



CE

Maßzeichnung (Dimensions / Dimensioni)



Magnetventil NAMUR 5/2- und 3/2- Wege

341N3197-495900

Solenoid valve NAMUR 5/2- and 3/2- ways

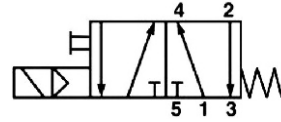
Elettrovalvola NAMUR 5/2- e 3/2- vie

Ex II2G/D EEx dm IIC T4, T5, T6 (PARKER)

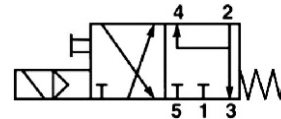
Technische Daten (Technical features / Dati tecnici)

Anschluss Air entry / Connessioni	Inlet G 1/4" / Outlet G 1/8"
Nennweite Dimension / Dimensione	4mm
Arbeitsdruck Air pressure / Pressione di utilizzo	2-10 bar
Temperatur Temperature / Temperatura	-25°C ... +65°C
Schutzart Enclosure / Grado di protezione	IP67 - DIN 40050
Spannung Voltage / Tensione	DC: 12V, 24V AC: 24V, 48V, 115V, 230V
Leistung Power consumption / Potenza assorbita	DC: 2W / AC: 2,5W
Nenndurchfluss Air flow / Portata	400 l/min

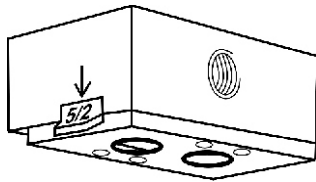
341N3197-495900 (5/2-Wege)
(5/2-ways) / (5/2-vie)



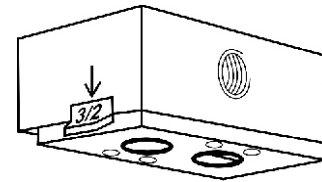
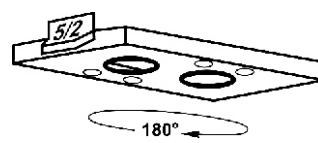
341N3197-495900 (3/2-Wege)
(3/2-ways) / (3/2-vie)



Wendepalette (Reversing plate / Piastrina della torretta)



5/2-Wege
5/2-ways
5/2-vie



3/2-Wege
3/2-ways
3/2-vie

Artikelnummer (Code number / Numero codice)

Preisliste Seite 1 Price list page 1 / Listino dei prezzi pagina 1

Spannung Voltage / Tensione	Artikelnummer Code number / Numero codice
12V DC	- C1
24V DC	- C2
24V AC	- A2
48V AC	- A4
115V AC	- E5
230V AC	- F4

341N3197-495900-

Model



Spannung
Voltage / Tensione
(C1/C2/A2/A4/E5/F4)